

# HYDRAULIC CAPSTANS

## DHC 1000 HP / Kr

### Maximum Pull

1000	1000 kg.
1600	1600 kg.
2200	2200 kg.
3000	3000 kg.
4500	4500 kg.
7000	7000 kg.
11000	11000 kg.

### Drive

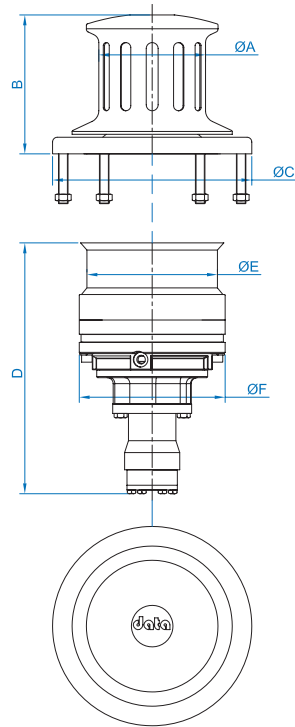
H	Hydraulic drive
H2	Double speed motor

### Gearbox Type

Pl	Planetary
W	Worm gear

### Material

B	Bronze
Kr	Stainless steel
P	Steel



	DHC 1000H	DHC 1600H	DHC 2200H	DHC 3000H	DHC 4500H	DHC 7000H	DHC 11000H
<b>A</b>	115	140	180	230	300	400	450
<b>B</b>	177	216	234	238	404	482	513
<b>C</b>	270	320	370	390	520	660	800
<b>D</b>	375	378	423	629	712	728	953
<b>E</b>	180	220	220	220	280	375	435
<b>F</b>	187	187	246	285	360	410	465

### HYDRAULIC DRIVE

DHC 1000 H  
DHC 1600 H  
DHC 2200 H  
DHC 3000 H  
DHC 4500 H  
DHC 7000 H  
DHC 11000 H



[datahidrolik.com](http://datahidrolik.com)