

DZC 7001/7002

DZC 7001 and 7002 are horizontal anchor windlasses with single or double gypsies. Electric or hydraulic versions are available providing a max. pull of 7500 kgs. It has a gypsy for chains 26 mm DIN766, 24, 26, 28, 30 or 32 mm stud-link.

	DZC 7001E / 7002E	DZC 7001H / 7002H
Drive	AC Electric Motor (210-440V, 3 ph)	Hydraulic Motor
Max. cont. Pull	6500 kg (18500W - 30 min)	6500 kg (30 min)
Max. pull	7500 kg (18500W - 2 min)	7200 kg (2 min)
Haulage speed	13 m/min.	12 m/min.
Gypsy for chain	26 mm DIN766, 24-26-28-30-32 Stud-link	26 mm DIN766, 24-26-28-30-32 Stud-link
Approximate weight		
Current draw (at max. cont.pull)/Hyd. pressure - Oil flow (on motor)	29.8A (15000W) - 34.5A (18500W)	180 bar - 60 lt/min
Motor power	15000W - 18500W (400V - 50hz)	



DZC 7001-1 E / P-26L/15**No. Of Gypsy & Drum**

7001	1 gypsy 1 warping drum
7002	2 gypsies 2 warping drums
7001-1	1 gypsy 1 rope drum 1 warping drum

Drive

E	E. Motor driven
H	Hydraulic motor driven

Gypsy & Drum Position

L	As the drawing In the opposite side
---	--

Material

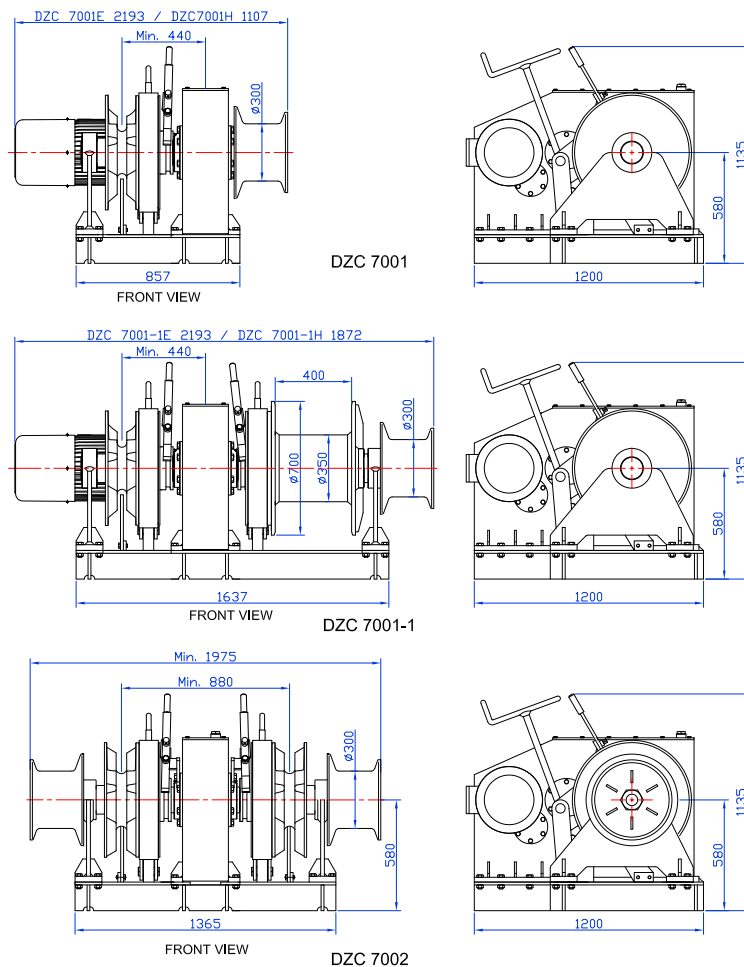
Kr	Stainless steel
P	Steel

Chain Type / Size

26K	26 mm DIN766
24L	24 mm Stud-link
26L	26 mm Stud-link
28L	28 mm Stud-link
30L	30 mm Stud-link
32L	32 mm Stud-link

E. Motor

15	15 kW 380VAC E. Motor
18.5	18.5 kW 380VAC E. Motor



FEATURES

Gypsies are equipped with both clutch and band brake to allow independent operation of gypsy and warping drum.

Chain can be dropped by losing band brake.

Gypsy is engaged by means of dog clutch..

Electric motor driven models are equipped with torque limiting coupling for over load protection.

Body is steel and covered with polyurethane paint..

High strength drive shaft and brake screw are stainless steel.

DOL starter for electric motor driven models.

Increased strength with vertical supports at the ends of main shaft which also allows to arrange the distance between two gypsies.

Hardened steel gears in oil bath.

OPTIONS

AC electric motor drive.

Hydraulic motor drive with single or double speed.

Mirror polished stainless steel gypsy, clutch and warping drum.

Single or double gypsy.

For single gypsy models, right and left versions available.

Single or double mooring drum with brake and clutch.

Starter with frequency converter.

Remote hydraulic released gypsy brake.

Foundation to be welded on deck.