



DZC 440E/450E

DZC 440E / 450E are the smallest windlasses in vertical range. They are driven by a 1200W (12 or 24VDC) electric motor providing a max. pull of 590 kgs. It has a gypsy for chains 8 or 10 mm DIN766.

DZC 440E / 450E	
Drive	DC Electric Motor (12 or 24V)
Max. cont. Pull	390 kg (S2)
Max. pull	590 kg (S3)
Haulage speed	16 m/min.
Gypsy for chain	8 - 10 mm DIN766
Approximate weight	19 / 20 kg
Current draw (at max. cont.pull)/Hyd. pressure - Oil flow (on motor)	125A (12V) - 70A (24V)
Motor power	1200W



datahidrolik.com

DZC 440 EKr / 1212 - 8

Material

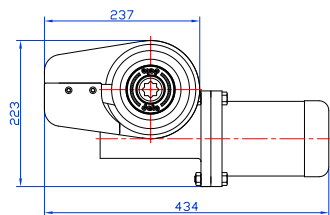
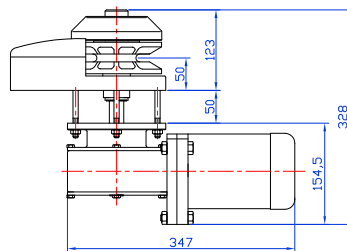
B	Bronze
Kr	Stainless steel

E. Motor

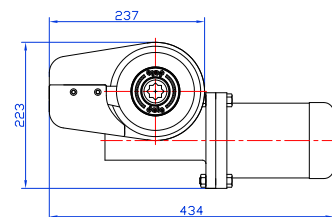
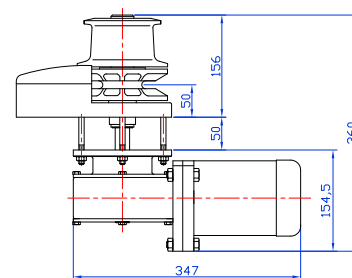
1212	1200 W - 12 V DC E. Motor
1224	1200 W - 24 V DC E. Motor

Chain Type / Size

8	8 mm. DIN 766
10	10 mm. DIN 766



DZC 440E



DZC 450E

DZC 450 EB / 1224 - 10

Material

B	Bronze
Kr	Stainless steel

E. Motor

1212	1200 W - 12 V DC E. Motor
1224	1200 W - 24 V DC E. Motor

Chain Type / Size

8	8 mm. DIN 766
10	10 mm. DIN 766

FEATURES

Manual override.

Chain can be dropped by means of loosable conical clutch which also provides overload protection.

Body, gypsy and clutch are chrome plated bronze. Gearbox is marine grade aluminium covered with black epoxy paint.

Drive shaft is stainless steel.

Warping drum is chrome plated aluminium.

Delivered with handle and marine type DC relays for reversable operation.

OPTIONS

Windlass with warping drum (DZC 450E) or with out drum (DZC440E).

Mirror polished stainless steel parts above deck.